



QUICK COUPLINGS

Special couplings

Update technology



NAGAHORI INDUSTRY CO., LTD.

Special couplings

Dust cover (Stainless steel)

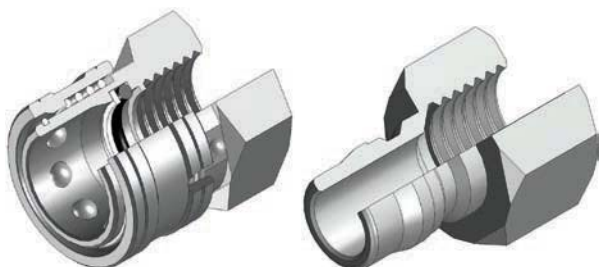
The material is stainless steel for application of SPE and TL type.



Dust cover for plugs

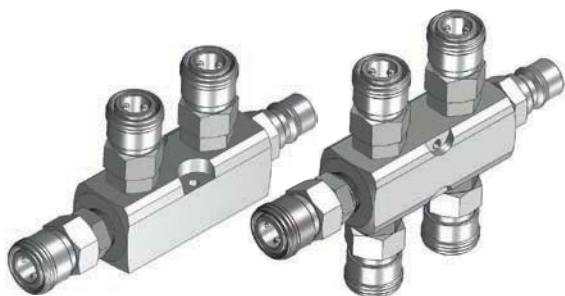
Coupling for high-pressure washers and car washers

Valveless type for working pressure up to 15MPa
Lock type of stainless steel body



Multi-connection

Different types are available.



Male thread type of SPE(S·P) and HP type

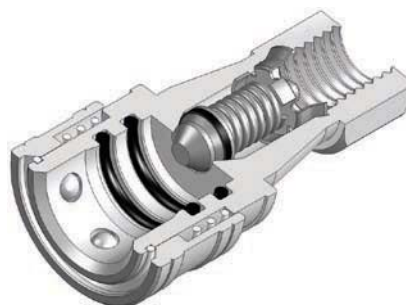
Using with a female work, an additional male nipple is unnecessary.



CSPE type

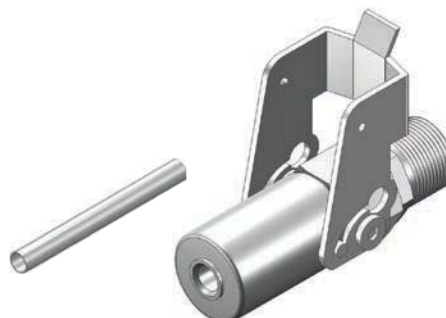
Vacuum coupling with double O-rings

Better airproof and better durability



Pipe coupling for copper pipe

Vacuum making and "freon gas" charging
The triple sealings assure airproof.



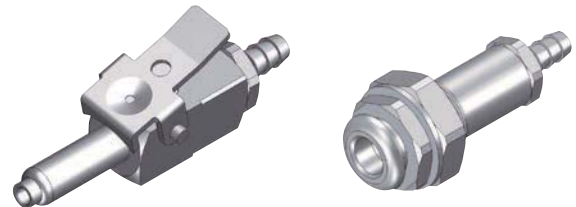
Engine-test coupling

One-touch application with the engine pipe reduces the engine test works.



Coupling for dental instruments and water piping

One-touch application mainly used for dental instruments.



Automatic coupling

Multi-located couplings are connected and disconnected automatically by hydraulic cylinder.



One-touch connection for male-thread work

Used in the inspection line

